

Contents

General Maintenance	P.1
Decimal Point Selector Switch	P.1
Rounding Switch	P.2
Grand Total / Rate Set Switch	P.2
Item Count Switch	P.2
Power / Print Switch	P.3
Key Index	P.3
Important Functions to Remember	P.3
Tax Calculation Function	P.4
Business Sales Calculation Function	P.4
Cash Change Function	P.4
Replacing the Ink Ribbon	P.5
Inserting Printing Paper	P.6
Calculation Example	P.33-38

General Maintenance

- Do not use or leave the calculator under direct sunlight. Areas subject to rapid temperature changes, high humidity, dust and dirt should also be avoided.
- Use a dry cloth to clean the casing of the unit. Do not use water or detergents.
- Only use the printer when the paper roll is loaded.
- Avoid using the calculator in places where there are iron filings, as this may affect the electrical circuits of the calculator.
- Do not place anything on top of the machine, particularly on top of the printer mechanism.
- Turn the calculator off before removing the plug from the electrical outlet.
- In case of electrical fault (i.e. smoke), disconnect the plug from the electrical point immediately. The socket outlet should be near to the equipment and easily accessible.
- Under the environment with electrostatic discharge, the sample may malfunction and require user to reset the sample.

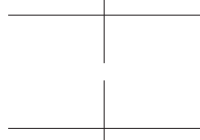
Decimal Point Selector Switch

DECIMAL : Used for designating the decimal point position (0 2 3 4 6) for calculated results.

+ (Add-Mode) : Addition and subtraction functions are performed with an automatic 2-digit decimal. It is convenient for currency calculations.

F (Floating Decimal Point) : All effective numbers up to 12 digits are printed or displayed.

1



Tax Calculation Function

TAX+ **Add Tax Key** – Used for adding the tax amount to the displayed figure.

TAX- **Deduct Tax Key** – Used for deducting the tax amount from the displayed figure.

Note: The entered tax rate will remain stored even when the calculator is turned off. However, the entered rate will be deleted. When the plug is disconnected, in this case please enter the rate again.

Business Sales Calculation Function

COST **SELL** **MARGIN** – Used for calculating the cost, selling price and profit margin amount. Enter the value of any 2 items to obtain the balance value item. (e.g. enter the value of the cost and the selling price to obtain the profit margin %.)

Cash Change Function

CHANGE : Used for calculating the change amount, it perform accurate and fast change calculation.

Overflow

In the following cases, "E" is displayed, a dotted line is printed, the keyboard is electronically locked, and further operation is impossible. Press **CE** to clear the overflow. The overflow function occurs when:

- The result or the memory content exceeds 12 digits to the left of the decimal point.
- Dividing by "0".
- The sequential operation speed is faster than the calculation processing speed. (Buffer Register Overflow)

- Electromagnetic interference or electrostatic discharge may cause the display or the memory and tax rate to be lost or altered. Should this occur, disconnect the plug from the electrical socket-outlet and connect after 30 seconds interval to restart the calculator. After restart be sure to set the tax rate again.

4



Rounding Switch

ROUNDING : Used for round-up [\uparrow], round-off [5/4], or round-down [\downarrow] to the pre-selected decimal digits in the result.

Grand Total / Rate Set Switch

GRAND TOTAL

GT / **GT** : When the calculations are performed with the GT switch set to "ON", the totals are accumulated in the grand total memory. Each time **GT** is pressed, the subtotal number is printed with the symbols GT+. When **GT** is pressed, the intermediate grand total is printed with the symbols G \diamond . Press **GT** successively to get the grand total followed by the symbols G \star .

RATE SET

GT / **GT** : Set switch to "RATE SET" for setting or recalling the TAX rate.

Item Count Switch

ITEM : At "n+" or "n+/-" position, the calculator count and print the number of calculation items up to 999.

< ITEM COUNTER >

When the "ITEM" switch is set at "n+", the calculator counts the number of times the **+** and **=** keys are pressed. When the switch is set at "n+/-", the calculator counts the number of times the **+** key is pressed and subtracts from the total numbers of times the **=** key is pressed.

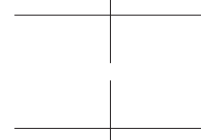
< MEMORY ITEM COUNT >

When the "ITEM" switch is set at "n+", the calculator counts number of times **M+** and **M-** keys are pressed. When the switch is set at "n+/-", the calculator counts the number of times the **M+** key is pressed and subtracts from the total number of times the **M-** key is pressed.

< PRINTOUT OF ITEM COUNT >

When the PRINT switch is turned "ON", and the "ITEM" switch is at the "n+" or "n+/-" position, the number of items recorded by the counter can print up to three digits on the left-hand side of the paper by pressing either the **CE** key or the **GT** key for item count and **M+** key or **M-** key for memory item count.

2



Specifications

Power source: AC230V ($\pm 15\%$) 50Hz, AC240V ($\pm 10\%$) 50Hz
Operation Temperature: 0°C to 40°C (32°F to 104°F)

Calculating Capacity: 12 digits maximum
Dimension: 325mm (W) x 219mm (L) x 74.5mm (H) /
12-5164" (W) x 8-5/8" (L) x 2-15/16" (H)

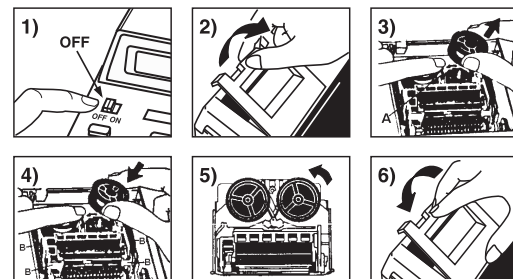
Weight: 1.55 kg (3.41 lb)
(Subject to change without notice)

Replacing The Ink Ribbon

Note: Turn the power switch off. (Figure 1)

- Lift up the tab on the back-side of the printer cover, and then remove the cover. (Figure 2)
- While pinching together the ribbon lock (A) in the direction of arrow, lift ribbon spools off the shafts. Discard the old ribbon and spools. (Figure 3)
- Separate the spools of new ribbon between the tape and printer head. Guide it around the four positions of the ribbon guide (B) and place the spools on the shafts. (Figure 4)
- When the ribbon spools have settled, release the ribbon locks. If necessary, rotate the spools until the pegs on the bottom of the spool seat themselves in the holes of the spool holder. (Figure 5)
- Rotate either spool to take up any ribbon slack, making sure that the ribbon is positioned around the four ribbon guides. Replace the printer cover. (Figure 6)

IMPORTANT: Use only the same type of ribbon spools.



5



Power / Print Switch

POWER OFF

PRINT / **ON** : Turns power off.

POWER ON / PRINT OFF

PRINT / **ON** : Turns power on. Entries and results will appear on the display, but will not be printed out.

POWER ON / PRINT ON

PRINT / **ON** : Entries and results will appear on the display and will be printed out.

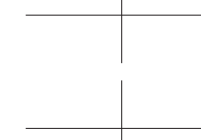
Key Index

- 1** **Paper Feed Key:** Used for advancing the paper.
- **Right Shift Key:** Used for shifting and correcting an entered numeral. A single press deletes the last digit on the right.
- % \pm** **Percent Plus-Minus Key:** Used for performing percentage, add-on and discount calculations.
- M \pm** **Memory Plus Equal Key:** Used for obtaining a calculation result and adding the result automatically to the memory. This key is also used for adding number to the memory.
- M \mp** **Memory Minus Equal Key:** Used for obtaining a calculation result and subtracting the result automatically from the memory. This key is also used for subtracting a number from the memory.
- M \diamond** **Memory Subtotal Key:** Used for obtaining intermediate result of the memory calculation. This key will not clear memory contents.
- M \star** **Memory Total and Memory Clear Key:** Used for obtaining total of memory contents. This key will clear memory contents at the same time.

Important Functions to Remember

- CE** **Clear Entry and Clear Key:** Press once to clear last entered value. Press again to clear all entered values except memory. This key is also used for clearing the overflow error.
- =** **Equal Key:** Used for obtaining multiplication and division results.
- CE** **Non-Add / Subtotal Key:** Used for printing out information which does not affect the calculation such as dates and serial numbers. Figure are printed on the left-hand side of the paper. It is also used for obtaining intermediate results.
- X** **Total Key:** Used for obtaining addition and subtraction results.

3



Tax Calculation Function

TAX+ **Add Tax Key** – Used for adding the tax amount to the displayed figure.

TAX- **Deduct Tax Key** – Used for deducting the tax amount from the displayed figure.

Note: The entered tax rate will remain stored even when the calculator is turned off. However, the entered rate will be deleted. When the plug is disconnected, in this case please enter the rate again.

Business Sales Calculation Function

COST **SELL** **MARGIN** – Used for calculating the cost, selling price and profit margin amount. Enter the value of any 2 items to obtain the balance value item. (e.g. enter the value of the cost and the selling price to obtain the profit margin %.)

Cash Change Function

CHANGE : Used for calculating the change amount, it perform accurate and fast change calculation.

Overflow

In the following cases, "E" is displayed, a dotted line is printed, the keyboard is electronically locked, and further operation is impossible. Press **CE** to clear the overflow. The overflow function occurs when:

- The result or the memory content exceeds 12 digits to the left of the decimal point.
- Dividing by "0".
- The sequential operation speed is faster than the calculation processing speed. (Buffer Register Overflow)

- Electromagnetic interference or electrostatic discharge may cause the display or the memory and tax rate to be lost or altered. Should this occur, disconnect the plug from the electrical socket-outlet and connect after 30 seconds interval to restart the calculator. After restart be sure to set the tax rate again.

4



Specifications

Power source: AC230V ($\pm 15\%$) 50Hz, AC240V ($\pm 10\%$) 50Hz
Operation Temperature: 0°C to 40°C (32°F to 104°F)

Calculating Capacity: 12 digits maximum
Dimension: 325mm (W) x 219mm (L) x 74.5mm (H) /
12-5164" (W) x 8-5/8" (L) x 2-15/16" (H)

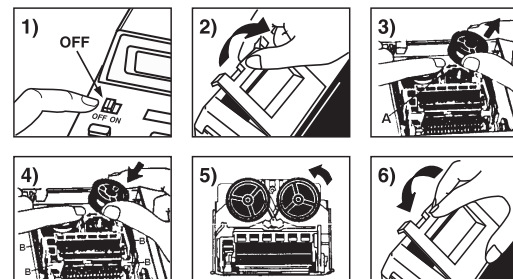
Weight: 1.55 kg (3.41 lb)
(Subject to change without notice)

Replacing The Ink Ribbon

Note: Turn the power switch off. (Figure 1)

- Lift up the tab on the back-side of the printer cover, and then remove the cover. (Figure 2)
- While pinching together the ribbon lock (A) in the direction of arrow, lift ribbon spools off the shafts. Discard the old ribbon and spools. (Figure 3)
- Separate the spools of new ribbon between the tape and printer head. Guide it around the four positions of the ribbon guide (B) and place the spools on the shafts. (Figure 4)
- When the ribbon spools have settled, release the ribbon locks. If necessary, rotate the spools until the pegs on the bottom of the spool seat themselves in the holes of the spool holder. (Figure 5)
- Rotate either spool to take up any ribbon slack, making sure that the ribbon is positioned around the four ribbon guides. Replace the printer cover. (Figure 6)

IMPORTANT: Use only the same type of ribbon spools.

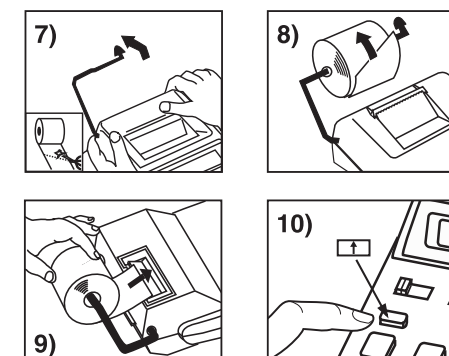


5



Inserting Printing Paper

- Lift up the paper arm (Figure 7).
 - When inserting the paper, cut the edge of the paper as shown.
- Place the new paper roll on the arm. The edge of the paper should be positioned as shown (Figure 8).
- Insert the paper into the slit located at the top of the machine as indicated (Figure 9).
- Turn the power switch on. Press the paper feed key **1** to advance the paper (Figure 10).
 - Suitable paper roll – Width: 57mm (2-1/4") / Diameter: max. 86mm (3-3/8")
 - Paper: standard paper 45kg / 1000 sheets / 788 x 1091mm / (99.2lb / 1000 sheets / 31" x 43")



6

